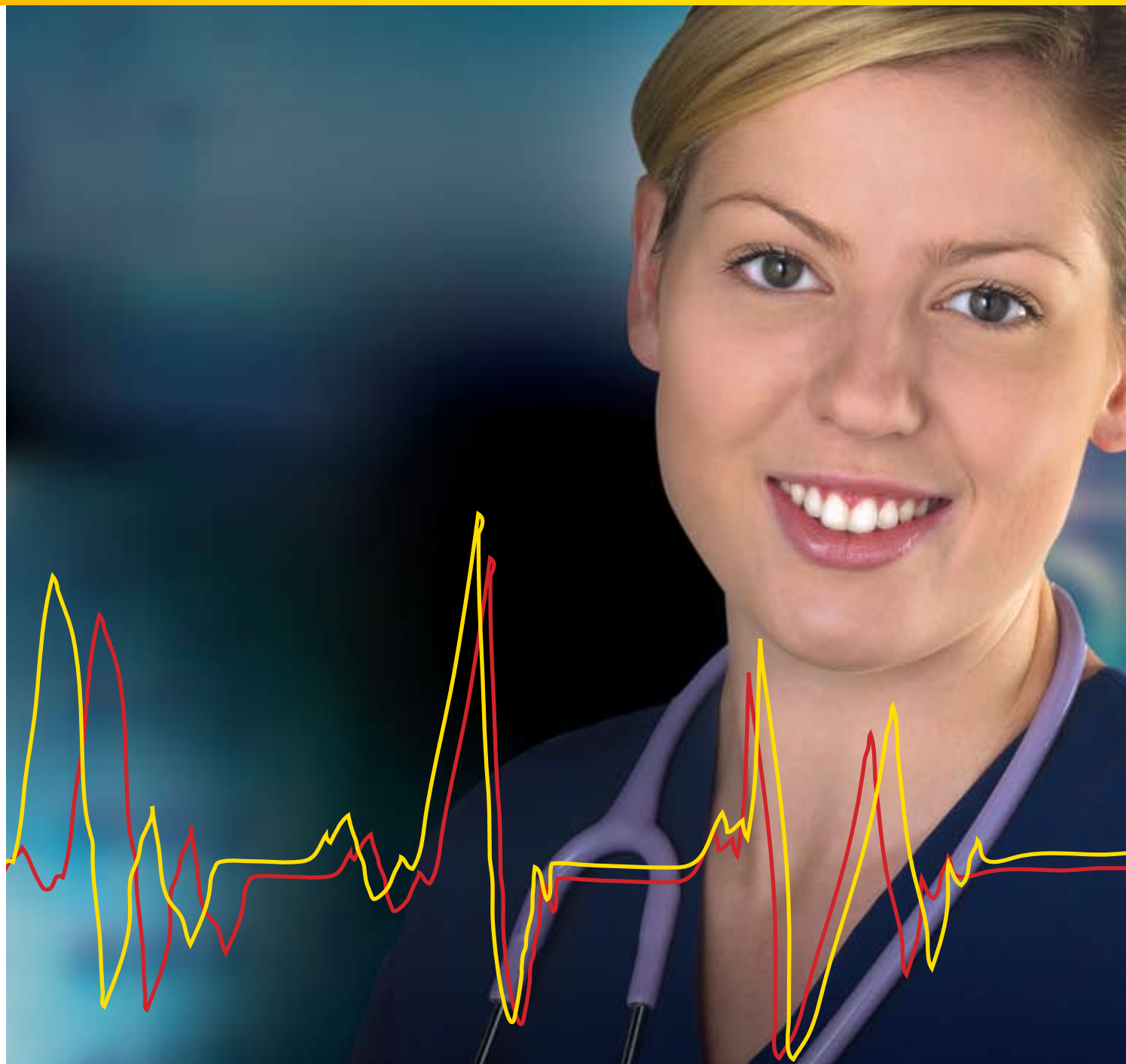


# POSTGRADUATE NURSING PROGRAMMES

POSTGRADUATE DIPLOMA IN NURSING  
MASTER OF NURSING

# 2011



SCHOOL OF HEALTH

[www.wintec.ac.nz](http://www.wintec.ac.nz)



**Wintec**  
WAIKATO INSTITUTE OF TECHNOLOGY  
Te Kuratini o Waikato

# WELCOME TO POSTGRADUATE STUDY AT WINTEC

Kia ora koutou,

Choosing postgraduate study options at Wintec will make you part of a growing elite group of students who take the opportunity to challenge their intellect and build on their skills and professional experience. At undergraduate level you learned the 'what' and 'how' about your area of study and now at postgraduate you can explore more of the 'why' and 'what if' of it.

To this end, we strongly support postgraduate students in their studies and research by providing dedicated resources and advice to not only them, but also to our teaching staff. This includes a dedicated postgraduate office, special workshops, international exchanges and access to an ever expanding global network of respected academic staff. They are all highly skilled and experienced practitioners in their fields with a real passion for learning.

Here at Wintec we have a history of reputable research as demonstrated by our involvement in the national Performance Based Research Funding (PBRF) system. This is only part of our commitment to ensuring our staff remains current and innovative in their teaching. We also maintain close relationships with relevant industries and the community so that Wintec's postgraduate programmes are well recognized and will offer a great variety of employment opportunities in the region as well as nationally and overseas.

So, I warmly encourage you to make this the year you choose postgraduate study at Wintec and we look forward to ensuring you are successful on your study journey with us.

All the best,



Merran Davis  
Dean

In the School of Health we see education as life changing, professionally and personally.

It extends and affirms the practice knowledge that clinicians bring to postgraduate level study.

Successful study at postgraduate level requires determination, an ability to engage with new ideas, and the courage to learn how to think differently.

Our educators and scholars are a unique group of people who are primarily engaged with students as independent learners, supporting them on an individual journey of inquiry.

Students studying at postgraduate level develop professional networks among their student colleagues. These networks, which also encompass teaching faculty, continue to support the development practice and applied research for nursing. Graduates of Wintec are a unique Alumni who are recognised nurse leaders, specialist clinicians, Nurse Practitioners and educators.

# WINTEC GRADUATES ARE RECOGNISABLE NURSES



**CELEBRATING THEIR ACHIEVEMENT.**  
Master of Nursing graduates Debbie Strode, Jenny Stratton and Megan Clarkson.

Because they have experienced education that:

- Has modules immediately relevant to practice and new models of care.
- Assists them to acquire critical and global perspectives in finding solutions to core issues.
- Is locally based and concerned with primary health care, rural and community centred approaches and solutions.
- Has modules delivered in partnership with practice, with a number of relevant and clinically based nurses as associate lecturers.
- Has a multi-disciplinary approach to teaching and learning that supports team development.
- Builds relationships with colleagues from throughout the regions to support the continuation of study and success.
- Is theory and practice development based that considers new ways of improving health in the workplace and community.
- Is accessible and provides feedback of progress to ensure expectations are understood and improves students' chances of success.
- Is success orientated with less than five percent attrition modules.
- Has a flourishing research culture. Excellence in research is achieved through adopting a holistic philosophy and pursuing a multi-disciplinary and multi-method approach. For further information on Wintec's research, please go to: [www.wintec.ac.nz/postgraduate/postgraduate-research.aspx](http://www.wintec.ac.nz/postgraduate/postgraduate-research.aspx).
- Is taught by staff that are research active, covering themes such as education and training, health informatics, health care delivery and public health. For tutor profiles, please go to: [www.wintec.ac.nz/health/about/staff](http://www.wintec.ac.nz/health/about/staff).

# STUDENT SUPPORT



As a postgraduate student at Wintec, you are well supported.

## The Postgraduate Office

The Postgraduate Office has been created to support postgraduate students in their studies and research by providing dedicated resources and advice. Administration of student research includes the approval and submission of research proposals and examination of student research work. Throughout the year, the office organises extra workshops for all the postgraduate students at Wintec and informs about research and conference opportunities, at Wintec as well as within New Zealand and abroad.

## Student Learning Services

Throughout the year, Student Learning Services (SLS) are available to you for advise and feedback.

We have a supportive team at SLS, who can help you with the following topics: essay structure and critical analysis in writing, literature reviews, library information, APA referencing and more.

This service including workshops, are free to all Wintec students.

## Computers

Dedicated workstations and offices are available to postgraduate students, enabling them to study away from the hustle and bustle of Wintec's Gallagher Hub.

## The Library

As a postgraduate student you will be given wider access to library resources and databases.

## Expertise and diversity through Guest Lecturers and Practice Partners

Scholars and guest lecturers are regularly invited to give presentations to our postgraduate nursing students. Guest speakers provide an opportunity for our nurses to extend their knowledge and discuss the latest research in their specialist area and every year, a detailed workshop programme is put together for each individual module.

The School of Health's Practice Partners model enables praxis and practice development and the delivery of clinical and theory knowledge together. Our Practice Partners are experts in their clinical practice and a vital part of our teaching team, working alongside our School of Health staff.

## Māori and Pasifika support – cultural supervision

The School of Health's Kaiāwhina offers dedicated support to our students identifying as Māori. Wintec also has an extensive Māori holding in the library. This section has a significant holding of Master's Thesis donated by Māori staff, writers and academics as a student and staff resource.

For students who identify as Māori or who are undertaking research with Māori participants or within a Māori context, appropriate cultural supervision in relation to their research activities will be negotiated. The School of Health enjoys a close working relationship with Wintec's Te Kete Kōnae, which offers support services to Māori and Pasifika students at Wintec, their whanau and staff at Wintec. It provides a central point for Māori and Pasifika students to come together.

## Scholarships

There are a wide variety of scholarships available to students wanting to do postgraduate nursing studies. In particular, Postgraduate Nursing students may be able to apply for the following scholarships:

- Ministry of Health Hauora Māori Scholarship
- New Zealand Nurses Organisation scholarships
- Trust Waikato Research Grant
- Wintec's Dame Te Atairangikaahu Nursing Scholarship
- Waikato Primary Rural Health Scholarships

For a full list of scholarships and information, please visit the website at: [www.wintec.ac.nz](http://www.wintec.ac.nz).

## Student Loans

You might qualify for limited full-time status through StudyLink, by enrolling in two modules. Postgraduate nursing study is offered part time for students to be able to fulfil their work commitments. For further details, please contact StudyLink directly.

For all funding options, please visit Wintec's Postgraduate Office webpage at [www.wintec.ac.nz/postgraduate](http://www.wintec.ac.nz/postgraduate).



## STUDENT PROFILE

Barbara Phillips-Walters

Public Health Nurse

Graduate: Postgraduate Certificate in Child and Family Health Nursing and Postgraduate Diploma in Nursing.

“Wintec is the best option because of the wonderful support and resources at hand.”

# POSTGRADUATE DIPLOMA IN NURSING

NU0010

## Level 8 Postgraduate Diploma

Starts February or July

For one year full-time equivalent study

Applications close December or June

(late applications may be considered)

Hamilton City Campus, other venues by negotiation

## Description

This four-module diploma consists of two core modules and two practice modules, covering a range of advanced speciality areas. Study is normally completed part-time over a two year period.

Students may exit this programme, after successfully completing two modules, with a Postgraduate Certificate in Nursing.

## Entry Requirements

Registered Nurse, Bachelor of Nursing or equivalent, with current practising certificate and six months full-time equivalent post-registration clinical experience to be undertaken in the last five years in a speciality area.

## Core Modules

NUPCD1B Practice Knowledge

Plus one of the following:

NUPCD17B Advanced Assessment and Clinical Reasoning: Acute Care  
NUPCD27 Advanced Assessment and Clinical Reasoning: Primary Health Care  
NUPCD30 Advanced Assessment and Clinical Reasoning: Child / Tamariki  
NUPCD31 Advanced Assessment and Clinical Reasoning: Older Adult



## Practice Modules

Note: not all modules will be offered every year.

NUPCD5A Special Topic  
NUPCD06 Leadership and Management in Nursing  
NUPCD10 Child Health  
NUPCD14 Teaching in Professional Practice  
NUPCD19 Health Development within a Cultural Context  
NUPCD24 Advanced Diabetes Nursing Practice  
NUPCD25B Cardiac Nursing  
NUPCD26 Advanced Nursing Practice in Breastcare  
NUPCD28 Nursing the Critically Ill Person  
NUPCD29 Primary Health Care Nursing in Context  
NUPCD32 Nursing Practice with the Older Adult

# MASTER OF NURSING

HL0502

## Level 9 Masters Degree

Starts February or July

For one year full-time equivalent study

Applications close November or June

(late applications may be considered)

Hamilton City Campus

## Description

This programme provides theoretical knowledge as well as clinical, technical and ethical learning experiences for the delivery of care and role development in advanced nursing practice.

## Entry Requirements

Wintec Postgraduate Diploma in Nursing with a grade average of B or better or equivalent qualification. All students are required to have graduate nursing experience in the health sector demonstrated through a professional portfolio.

Prerequisite for Option 1: Advanced Assessment and Clinical Reasoning

## Core Modules

HLNU801 Nursing Research

Plus one of the following options:

HLNU902 Option 1 - Research Project  
HLNU904 Option 1 - Advanced Nursing Practice

HLNU903 Option 2 - Dissertation

## Prescribing Module

A nurse who wishes to complete a practice based Master of Nursing with Prescribing (in their degree), must select Option 1) and incorporate, in their proposed programme of study, a Nursing Council of New Zealand approved Level 8 pharmacology and/or prescribing module (value 30 credits).

International students must also hold a current New Zealand practicing certificate as a registered nurse and have an IELTS score of 7 in each band.

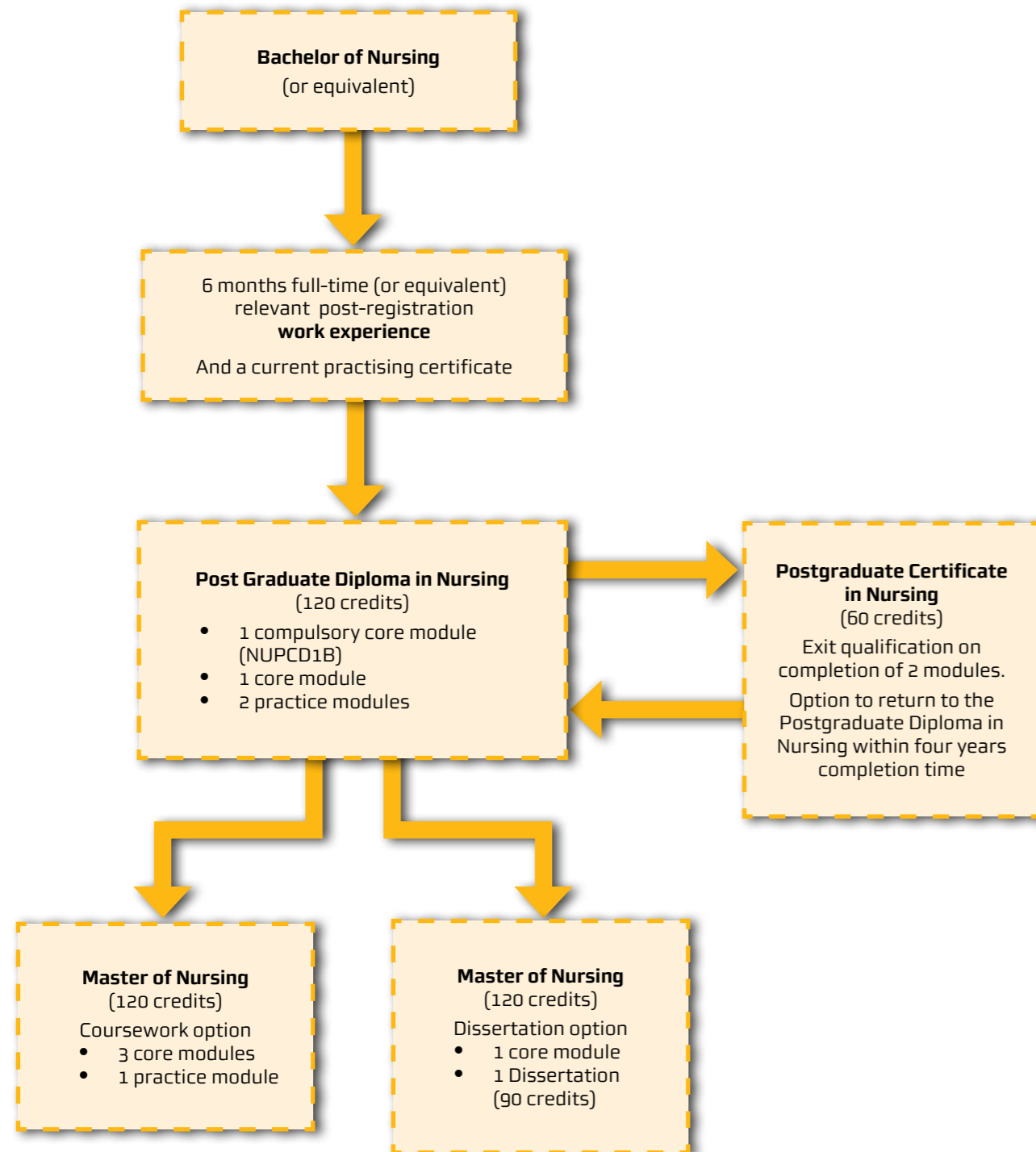


## Practice Modules

Note: not all modules will be offered every year.

NUPCD5A Special Topic  
NUPCD06 Leadership and Management in Nursing  
NUPCD10 Child Health  
NUPCD14 Teaching in Professional Practice  
NUPCD19 Health Development within a Cultural Context  
NUPCD24 Advanced Diabetes Nursing Practice  
NUPCD25B Cardiac Nursing  
NUPCD26 Advanced Nursing Practice in Breastcare  
NUPCD28 Nursing the Critically Ill Person  
NUPCD29 Primary Health Care Nursing in Context  
NUPCD32 Nursing Practice with the Older Adult

# PATHWAYS



# MODULES OFFERED IN 2011

Module Code	Module Name	Description	Venue
<b>Semester 1</b>			
NUPCD1B	Practice Knowledge	Core Module PG Dip / Level 8 / 30 credits	Hamilton
NUPCD5A	Special Topic	Practice Module PG Dip & MN / Level 8 / 30 credits	Hamilton
NUPCD06	Leadership and Management in Nursing	Practice Module PG Dip & MN / Level 8 / 30 credits	Tauranga
NUPCD17B	Advanced Assessment and Clinical Reasoning: Acute Care	Core Module PG Dip / Level 8 / 30 credits	Tauranga
NUPCD24	Advanced Diabetes Nursing Practice	Practice Module PG Dip & MN / Level 8 / 30 credits	Hamilton
NUPCD25B	Cardiac Nursing	Practice Module PG Dip & MN / Level 8 / 30 credits	Hamilton
NUPCD29	Primary Health Care Nursing in Context	Practice Module PG Dip & MN / Level 8 / 30 credits	Hamilton
NUPCD32	Nursing Practice with the Older Adult	Practice Module PG Dip & MN / Level 8 / 30 credits	Hamilton
HLNU801	Nursing Research (full year)	Core Module MN / Level 8 / 30 credits	Hamilton
HLNU902	Research Project (full year)	Core Module Option 1 MN / Level 9 / 30 credits	Hamilton
HLNU903	Dissertation (18 months)	Core Module Option 2 MN / Level 9 / 90 credits	Hamilton
HLNU904	Advanced Nursing Practice (full year)	Core Module Option 1 MN / Level 9 / 30 credits	Hamilton
<b>Semester 2</b>			
NUPCD1B	Practice Knowledge	Core Module PG Dip / Level 8 / 30 credits	Tauranga
NUPCD02	Te Whiriwhiri Oranga Māori (The Weaving of Wellbeing)	Core Module PG Dip / Level 8 / 30 credits	To be confirmed*
NUPCD5A	Special Topic	Practice Module PG Dip & MN / Level 8 / 30 credits	Hamilton
NUPCD06	Leadership and Management in Nursing	Practice Module PG Dip & MN / Level 8 / 30 credits	Hamilton
NUPCD10	Child Health	Practice Module PG Dip & MN / Level 8 / 30 credits	Hamilton
NUPCD14	Teaching in Professional Practice	Practice Module PG Dip & MN / Level 8 / 30 credits	Tauranga
NUPCD17B	Advanced Assessment and Clinical Reasoning: Acute Care	Core Module PG Dip / Level 8 / 30 credits	Hamilton
NUPCD27	Advanced Assessment and Clinical Reasoning: Primary Health Care	Practice Module PG Dip & MN / Level 8 / 30 credits	Hamilton
NUPCD30	Advanced Assessment and Clinical Reasoning: Children / Tamariki	Core Module PG Dip / Level 8 / 30 credits	Hamilton
NUPCD31	Advanced Assessment and Clinical Reasoning: Older Adult	Core Module PG Dip / Level 8 / 30 credits	Hamilton

\*Venue dependent on student enrolments.

---

## PRACTICE KNOWLEDGE

NUPCD1B

---

**For 1 semester**  
**30 credits**  
**Level 8**

### Workshop Dates

#### Hamilton

24 and 25 February 2011  
31st March and 1 April 2011  
5 and 6 May 2011  
9 June 2011 (presentations)

#### Tauranga

21 and 22 July 2011  
25 and 26 August 2011  
6 and 7 October 2011  
3 November 2011 (presentations)

### Content

This core module forms part of the Postgraduate Diploma in Nursing.

It is designed to assist an advanced Nurse to critically evaluate practice knowledge and clinical scholarship in the context of advanced nursing practice. The module supports the development of nursing strategies to meet the challenges of the changing health care environment and to enable the nurse to provide best practice outcomes at an advanced level.

The module is delivered in workshops supported by visiting scholars, guest practitioners and nurse teachers.

---

## TE WHIRIWHIRI ORANGA MĀORI (THE WEAVING OF WELLBEING)

NUPCD02

---

**For 1 semester**  
**30 credits**  
**Level 8**

### Workshop Dates

The venue is dependent on student enrolments

14 and 15 July 2011  
18 and 19 August 2011  
29 and 30 September 2011  
3 November 2011 (presentations)

### Content

This core module may be taken as part of the Postgraduate Diploma in Nursing or as a stand alone module.

It is designed to critically analyse and examine traditional Māori notions of health, illness and caring and a comparative analysis with Western nursing knowledge and its construction of practice. Module workshops will be held in a Marae setting.

The module will be offered subject to viable student numbers.

---

## SPECIAL TOPIC

NUPCD5A

---

**For 1 semester**  
**30 credits**  
**Level 8**

### Workshop Dates

#### Hamilton

9 February 2011  
13 April 2011

#### Hamilton

20 July 2011  
14 September 2011

### Content

This practice module may be taken as part of the Postgraduate Diploma in Nursing and / or Master of Nursing, or as a standalone module.

To be eligible for enrolment, you must:

- Have completed a minimum of a Postgraduate Certificate (two level 8 modules)
- Be currently in practice

This special topic module offers you the opportunity to study a particular area of interest related to nursing practice. You will negotiate with a lecturer to determine the scope of the project. Examples of special topics include a directed research project, a research proposal, literature review, an in depth essay or significant report.

It is desirable that the topic project be supervised conjointly by a Wintec academic and an advanced nurse from your area of practice.



---

# LEADERSHIP AND MANAGEMENT IN NURSING

NUPCD06

---

**For 1 semester**  
**30 credits**  
**Level 8**

## Workshop Dates

### Tauranga

7 and 8 March 2011  
18 and 19 April 2011  
30 and 31 May 2011

### Hamilton

18 and 19 July 2011  
29 and 30 August 2011  
10 and 11 October 2011

## Content

This practice module may be taken as part of the Postgraduate Diploma in Nursing, and / or the Master of Nursing, or as a standalone paper.

The module is designed to prepare advanced nurses to critically analyse leadership practices in the context of a dynamic and culturally diverse health care environment. You will also be able to further develop leadership opportunities and examine management skills and concepts in the context of your own practice environments.

This module also links closely with DHBNZ nursing leadership competencies and career aspirations:

- Identification of the roles and functions of leadership
- Comparing and contrasting leadership and management models
- Exploration of strategies for leadership and management in a contemporary healthcare environment. The process here includes exploration of the role of visioning in development of effective strategies, and analysis of strategic planning needs in terms of own organisation / area.
- Analysis of strategies for managing change, clinical governance and workforce development effectively, in an environment of constant change.

---

# CHILD HEALTH

NUPCD10

---

**For 1 semester**  
**30 credits**  
**Level 8**

## Workshop Dates

### Hamilton

1 and 2 August 2011  
5 and 6 September 2011  
20 and 21 October 2011

## Content

This practice module may be taken as part of the Postgraduate Diploma in Nursing and / or the Master of Nursing, or as a stand alone module.

It is designed to develop specialty child health nursing practice for home, hospital and community settings incorporating family centred care, within a cultural context.

It is focusing on the development and application of research in practice which is central to service planning, integration and delivery of services within a multi-disciplinary environment.

The aim of this module is to:

- Identify and evaluate contemporary issues for child health
- Critically explore the role of nurses specialising in child health
- Critically examine models of care in child health nursing
- Utilise evidence based practice in child health nursing

This module will be offered subject to viable student numbers.



## STUDENT PROFILE

Helen Ashton

Primary Health Nurse and  
Nursing Clinic Co-ordinator

Graduate : Postgraduate  
Diploma in Nursing

Student: Master of Nursing

“It has helped me understand learning styles and aided me in relating to students, new graduates and other nurses; these are crucial skills in nursing practice.”

---

# TEACHING IN PROFESSIONAL PRACTICE

NUPCD14

---

**For 1 semester**  
**30 credits**  
**Level 8**

## Workshop Dates

### Tauranga

25 and 26 July 2011  
5, 6 and 7 September 2011  
17 and 18 October 2011

## Content

This practice module may be taken as part of the Postgraduate Diploma in Nursing and / or Master of Nursing.

The module focuses on Registered Nurses as learning-teaching partners with nursing colleagues at all levels in clinical practice settings.

The module has been developed as a programme of learning for Registered Nurses who wish to advance their knowledge of learning and teaching in clinical practice, and thus their ability to support nurse colleagues in a range of health care settings.

You will develop an approach to learning which will encourage inquiry, critical thinking and professional judgement through reflexive practice in clinical learning-teaching.

It is of particular value to preceptors, mentors and partners in practice and Clinical Nurse Educators.

---

# ADVANCED ASSESSMENT AND CLINICAL REASONING: ACUTE CARE

NUPCD17B

---

**For 1 semester**  
**30 credits**  
**Level 8**

## Workshop Dates

### Tauranga

3 and 4 March 2011  
7 and 8 April 2011  
12 and 13 May 2011  
6 – 10 June 2011 (one day within this exam week)

### Hamilton

28 and 29 July 2011  
1 and 2 September  
13 and 14 October  
7 – 11 November 2011 (one day within this exam week)

## Content

This core module may be taken as part of the Postgraduate Diploma in Nursing or as a standalone module.

This module is designed to enable students to demonstrate advanced nursing knowledge and skill in eliciting assessment data, using diagnostic approaches and formulating therapeutic plans in collaboration with clients, their families, and other health professionals. Students will undertake health assessments and engage in clinical reasoning to respond to the actual and potential health needs of specific population groups. Learning activities will extend students' knowledge of applied science, pharmacology and clinical reasoning skills for advanced nursing practice with specific population groups.

The aim of this module is to:

- Enable you to enhance the nursing care you provide and to prepare you for advanced nursing practice roles
- Extend your knowledge of the relevant pathophysiology of selected body systems
- Enable you to demonstrate an extended repertoire of assessment techniques in obtaining physiological data relevant to the health of the patients you provide nursing care to
- Develop your advanced nursing knowledge and skill in the collection of data, data interpretation related to the patient's health status, the use of diagnostic approaches and the formulation of therapeutic plans, in collaboration with patients, their families and other health professionals
- Develop your professional judgement, problem solving and decision making skills while practicing within the legislative, contractual, ethical, health and social policy contexts of New Zealand society

---

# ADVANCED DIABETES NURSING PRACTICE

NUPCD24

---

**For 1 semester**  
**30 credits**  
**Level 8**

## Workshop Dates

### Hamilton

14 and 15 February 2011  
21 and 22 March 2011  
11 and 12 May 2011

## Content

This practice module may be taken as part of the Postgraduate Diploma in Nursing and/ or the Master of Nursing or as a standalone module.

This module was designed and developed in collaboration with the National Diabetes Education Framework Group to support Level 3, proficient diabetes nurse competencies for nurses specialising in diabetes.

The aim of this module is for you to:

- Demonstrate advanced nursing knowledge in client assessment, care planning, continuing care and management plan, evaluation and referrals in diabetes care in partnership with patients and their families and communities
- Critically examine pathophysiology and advances in diabetes diagnostic and therapeutic approaches
- Develop educational strategies with clients, families / whanau and communities promoting self management of diabetes and healthy lifestyle
- Critically analyse research evidence and inquiry methods for advanced diabetes nursing practice and lifestyle education
- Critically examine legal, ethical and professional responsibilities in advanced diabetes nursing practice

---

# CARDIAC NURSING

NUPCD25B

---

**For 1 semester**  
**30 credits**  
**Level 8**

## Workshop Dates

### Hamilton

17 and 18 February 2011  
24 and 25 March 2011  
2 and 3 May 2011

## Content

This practice module may be taken as part of the Postgraduate Diploma in Nursing and/or the Master of Nursing or as a stand alone module.

It is designed for nurses working in cardiac care, catheter labs, cardiac rehabilitation or step down cardiology clinical areas and primary health care

The module is designed to enable registered nurses to advance their knowledge and skills for nursing practice to meet the health care needs of clients with cardiac disorders. Participants will explore nursing roles and relationships within interdisciplinary health care teams and develop strategies to advance nursing knowledge and therapeutic skills for cardiac nursing.



## ADVANCED ASSESSMENT AND CLINICAL REASONING: PRIMARY HEALTH CARE

NUPCD27

**For 1 semester**  
**30 credits**  
**Level 8**

### Workshop Dates

**Hamilton**  
28 and 29 July 2011  
1 and 2 September 2011  
13 and 14 October 2011  
7 - 11 November 2011 (one day within this exam week)

### Content

This core module may be taken as part of the Postgraduate Diploma in Nursing and/or the Master of Nursing, or as a stand alone module.

This module is designed to enable students to demonstrate advanced nursing knowledge and skill in eliciting assessment data, using diagnostic approaches, and formulating therapeutic plans in collaboration with clients, their families, and other health professionals. Students will undertake health assessments and engage in clinical reasoning to respond to the actual and potential health needs of specific population groups. Learning activities will extend students' knowledge of applied science, pharmacology and clinical reasoning skills for advanced nursing practice with specific population groups.

The aim of this module is to:

- Enable you to enhance the nursing care you provide and to prepare you for advanced nursing practice roles
- Extend your knowledge of the relevant applied science and pathophysiology of selected body systems
- Enable you to demonstrate advanced health assessment skills in obtaining physiological, ecological and social data, relevant to primary health care nursing
- Develop your advanced nursing knowledge and skill in the collection of data, data interpretation related to health status, the use of diagnostic approaches and the formulation of therapeutic plans, in collaboration with clients, their families and other health professionals
- Develop your professional judgement, problem solving and decision making skills while practicing within the legislative, contractual, ethical and health and social policy contexts of New Zealand society.

## PRIMARY HEALTH CARE NURSING IN CONTEXT

NUPCD29

**For 1 semester**  
**30 credits**  
**Level 8**

### Workshop Dates

**Hamilton**  
17 and 18 February 2011  
29 and 30 March 2011  
9 and 10 May 2011

### Content

This practice module may be taken as part of the Postgraduate Diploma in Nursing and/or the Master of Nursing, or as a stand alone module.

This module is designed for nurses whose primary location of work is outside hospitals and whose practice draws on the spectrum of primary health care, population health, public health and health promotion.

The range of nurses may include Practice Nurses, Iwi Health Nurses, District Nurses, Public Health Nurses, Plunket Nurses, Hospice Nurses, Community Mental Health Nurses, Occupational Health Nurses and Independent Nurse Practitioners.

The purpose of this module is to develop and advance primary health care nurses' practice within their specific field. Nurses will focus on the development of best practice and critique contemporary issues in primary health care nursing.

## ADVANCED ASSESSMENT AND CLINICAL REASONING – CHILDREN / TAMARIKI

NUPCD30

**For 1 semester**  
**30 credits**  
**Level 8**

### Workshop Dates

This module starts online on 11 July 2011.

**Hamilton**  
28 and 29 July 2011  
5 and 6 September 2011  
20 and 21 October 2011

### Content

This core module may be taken as part of the Postgraduate Diploma in Nursing, or as a stand alone module.

This module is designed to enable students to demonstrate advanced nursing knowledge and skill in eliciting assessment data, using diagnostic approaches, and formulating therapeutic plans in collaboration with clients, their families, and other health professionals.

Students will undertake health assessments and engage in clinical reasoning to respond to the actual and potential health needs of specific population groups. In this module, learning activities will extend students' knowledge of applied science, pharmacology and clinical reasoning skills for advanced nursing practice with children/tamariki.

The aim of this module is to:

- Enable you to enhance the nursing care you provide and to prepare you for advanced nursing practice roles
- Enable you to demonstrate child physical and developmental assessment skills and techniques in obtaining physiological and develop mental data relevant to the health of the children / tamariki you provide nursing care to
- Extend your knowledge of relevant child pathophysiology of selected body systems
- Develop your advanced nursing knowledge and skill in the collection of data, data interpretation related to children/tamariki health status, the use of diagnostic approaches and the formulation of therapeutic plans, in collaboration with children/tamariki their families and other health professionals
- Develop your professional judgement, problem solving and decision making skills while practicing within the legislative, contractual, ethical and health and social policy contexts of New Zealand society



## ADVANCED ASSESSMENT AND CLINICAL REASONING: OLDER ADULT

NUPCD31

**For 1 semester  
30 credits  
Level 8**

### Workshop Dates

**Hamilton**  
28 and 29 July 2011  
1 and 2 September 2011  
13 and 14 October 2011  
7 - 11 November 2011 (one day within this exam week)

### Content

This core module may be taken as part of the Postgraduate Diploma in Nursing and/or the Master of Nursing, or as a stand alone module.

This module is designed to enable students to demonstrate advanced nursing knowledge and skill in eliciting assessment data, using diagnostic approaches, and formulating therapeutic plans in collaboration with clients, their families, and other health professionals. Students will undertake health assessments and engage in clinical reasoning to respond to the actual and potential health needs of specific population groups. In this module, learning activities will extend students' knowledge of applied science, pharmacology and clinical reasoning skills for advanced nursing practice with older adults.

The aim of this module is to:

- Enable you to enhance the nursing care you provide and to prepare you for advanced nursing practice roles
- Extend your knowledge of the relevant pathophysiology of selected body systems.
- Enable you to demonstrate an extended repertoire of assessment techniques in obtaining physiological data relevant to the health of older patients you provide nursing care to
- Develop your advanced nursing knowledge and skill in the collection of data and data interpretation related to older person's health status, the use of diagnostic approaches and the formulation of therapeutic plans, in collaboration with patients, their families and other health professionals
- Develop your professional judgement, problem solving and decision making skills while practicing within the legislative, contractual, ethical, health and social policy contexts of New Zealand society.

## NURSING PRACTICE WITH THE OLDER ADULT

NUPCD32

**For 1 semester  
30 credits  
Level 8**

### Workshop Dates

**Hamilton**  
22 and 23 February 2011  
4 and 5 April 2011  
16 and 17 May 2011

### Content

This practice module may be taken as part of the Postgraduate Diploma in Nursing and/or the Master of Nursing, or as a stand alone module.

This module is designed to enable Registered Nurses to advance their knowledge and skills in critical gerontology. The module fosters an approach to learning that supports critical inquiry in this area of nursing practice. Students will explore and deconstruct discourses of aging that limit the potential of nurses to work collaboratively with older adults within their specific contexts.

The expected outcome for students is the development of innovative health promoting practice development. The development will be informed by multiple ways of thinking and awareness of the deeply ethical nature of nursing practice.

The aim of this module is to:

- Understand and incorporate knowledge of the diverse realities of older adults in their practice
- Critically analyse and utilise health promoting approaches that enhance the well being of older adults and family/whanau
- Critically analyse and employ evidence-based research to inform practice development
- Critically examine legal, ethical and professional responsibilities in practice with older adults

## NURSING RESEARCH

HLNU801

**For 1 year  
30 credits  
Level 8**

### Workshop Dates

**Hamilton**  
1 and 2 March 2011  
3 and 4 May 2011  
5 and 6 July 2011  
20 and 21 September 2011

### Content

This core module forms part of the Master of Nursing programme structure.

It explores the knowledge, procedures, resources, issues and possibilities associated with nursing research within a practice area. It is designed to give an overview of the range of research approaches for clinical inquiry, and to provide the skills required for planning, conducting, writing and disseminating nursing research.

Upon successful completion of this module you will be able to:

- Demonstrate critical exposition of advanced nursing knowledge for clinical inquiry
- Articulate contextual, theoretical and methodological positions for clinical inquiry
- Apply and practice research knowledge and skills to submission of a full research proposal

---

## RESEARCH PROJECT

HLNU902

---

**For 1 year**  
**30 credits**  
**Level 9**

### Workshop Dates

**Hamilton**  
10 and 11 February 2011  
12 and 13 May 2011  
4 and 5 August 2011

### Content

This module forms part of the Master of Nursing programme and is a core module for Option 1.

It focuses on the development of a supervised research project, in which you will choose a specific issue related to your practice area. You will critically explore, analyse and articulate the findings that result from this enquiry. You, in consultation with academic staff, select a topic and a potential supervisor will be allocated to you. The supervision process will include assistance with selecting and scoping the topic, planning the project, managing the project, and presenting the report. You will be required to meet regularly with our appointed supervisor.



**Anna Dawson**  
Nurse Practitioner -  
Adult Chronic Conditions  
Graduate: Master of Nursing

**“This well rounded  
Masters included a  
research project with  
a critical analysis  
of my practice and  
has prepared me  
to become a Nurse  
Practitioner.”**

---

## DISSERTATION

HLNU903

---

**For 18 months**  
**90 credits**  
**Level 9**

### Workshop Dates

**Hamilton**  
10 and 11 February 2011  
12 and 13 May 2011  
4 and 5 August 2011

### Content

This module forms part of the Master of Nursing programme and is a core module for Option 2.

It focuses on the development of a supervised research dissertation that will contribute to advancing nursing knowledge in your area of specialisation.

You will be expected to attend scheduled research schools through the duration of the dissertation. These will be negotiated with the student to coincide with either HLNU902 and/or HLNU801 workshop dates. However, most work will be completed independently under the supervision of a suitably qualified academic staff member. Supervision will be negotiated between you and your supervisor.

You will also complete a portfolio to demonstrate advanced nursing competencies.

---

## ADVANCED NURSING PRACTICE

HLNU904

---

**For 1 year**  
**30 credits**  
**Level 9**

### Workshop Dates

**Hamilton**  
16 and 17 March 2011  
15 and 16 September 2011  
27 and 28 October 2011

### Content

This module forms part of the Master of Nursing programme and is a core module for Option 1.

It enables you to consolidate and articulate advanced nursing practice within your practice area. You will be mentored in presenting evidence of advanced nursing practice as a portfolio for the Nursing Council of New Zealand Nurse Practitioner Competencies.

Workshop sessions will be held to support you in the module. Guest clinicians from nursing and other disciplines, visiting scholars and Nurse Practitioners will participate in sessions with students enabling you to engage in critically reflexive discussions about your practice.

---

# FOUR STEPS FOR ENROLLING IN POSTGRADUATE NURSING STUDIES

---

## 1 Choose your module

Feel free to contact the postgraduate nursing team at [pgnursing@wintec.ac.nz](mailto:pgnursing@wintec.ac.nz) if you would like to discuss your pathway options within the programme and what modules would best compliment your area of work.

## 2 Get an application form

Applications are available online at [www.wintec.ac.nz/applyonline](http://www.wintec.ac.nz/applyonline) or directly through the Student Enrolment and Information Centre.

**First time postgraduate nursing students need to complete and supply:**

- Application to Enrol Form, indicating your module of choice under question 17/18
- Additional Information form
- Verified copy of your passport or your birth certificate
- Verified copy of your current practicing certificate
- Payment By Third party form if applicable

**Postgraduate students re-enrolling in the next module can simply complete and supply:**

- Change to Enrolment or Withdrawal Form or a Returning Student Form available online at [www.wintec.ac.nz/forms](http://www.wintec.ac.nz/forms) or directly through the Student Enrolment and Information Centre
- Verified copy of your current practicing certificate
- Third party form if applicable

## 3 Check

- The Wintec website for scholarship details
- With your employer if your chosen module will be funded
- If you are CTA or employer funded, be sure to complete a Payment By Third Party Form

## 4 Send

**Send all your documentation to:**

Wintec  
Freepost 566  
Private Bag 3036  
Hamilton 3240

